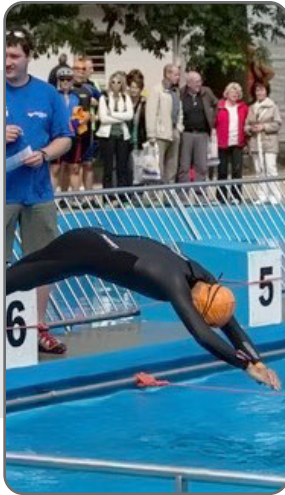


To learn more visit:
www.school.sportident.com

Look at our other flyer:
"Orienteering at schools"
"Physical education at schools"



 **SPORTident**
Make the most of your sport!



 **SPORTident**
Make the most of your sport!

SPORTident GmbH
Markt 14
D-99310 Arnstadt Germany

phone: +49 - 3628 78300

email: support@sportident.com
www.sportident.com

© SPORTident - 06/2013 - V 01

Sport time measurement
at schools





You are a physical education teacher at a school. Over the year there are a number of needs to test and evaluate the performance of your students. Application cases are not only the ordinary running tests over 1 mile or 3000 metres. A school often manages smaller events in such areas like running, biking or cross country skiing. Measuring the total time is a need. Additional lap times may be welcome as they offer more information to compare with others and how to improve. Accurate time keeping and assignment to the students need concentration - not easy if time counts and assistants are rare.



SPORTident can help. SPORTident Air+ is the system configuration for easy contactless sports timing. It is compatible to the whole SPORTident system. Key component is the active card SIAC1. It can be used with all types of SPORTident stations. All handling processes – preparation for use, evaluation of data, quick printouts – in the SPORTident system are unified. Just for the contactless timing process SPORTident beacon stations BS11 are needed. BS11 offers recording distances up to 1,5 metre (BS11-BS) or up to 3 metres (BS11-BL).



Our sample shows the SPORTident system configuration for a 3000 m race. Evaluation of SIAC1 data records (lap and total times) is done just with the SPORTident Printout-Set or by PC-software. To make it easy to start we offer the fully configured SPORTident School- and Training-Set RACE. And of course – SPORTident AIR+ can not only be used in running but also in any other outdoor sports like cross country running, biking and swimming.

SPORTident School- and Training Set RACE
Sport Time Measurement at Schools

2013-07-04 14:06:27
Results

Course 1

1 Start no. 4	00:10:58
2 Start no. 1	00:10:59
3 Start no. 2	00:11:01
4 Start no. 3	00:11:02

service and support:
www.sportident.com
SPORTident - System



The set itself is a fully featured configuration of SIAC's, SI-Stations and a thermal printer. The use of the SPORTident system is possible without a PC. The whole configuration is battery-driven. The equipment is very robust and will also cope with rough treatment. It is water resistant (except the printer), which makes it suitable not only in the gym but also in the playground.

